

Sample IR questions_v.01

Sample Question 1

Question 1: Which gland is suspected these lesions arise from?

Question 2: Which part of the eyelid is this condition particularly found?

Question 3: What are the treatment modalities for this condition?



Correct answer

Answer 1: Gland of Molls

Answer 2: Medial canthus

Answer 3:

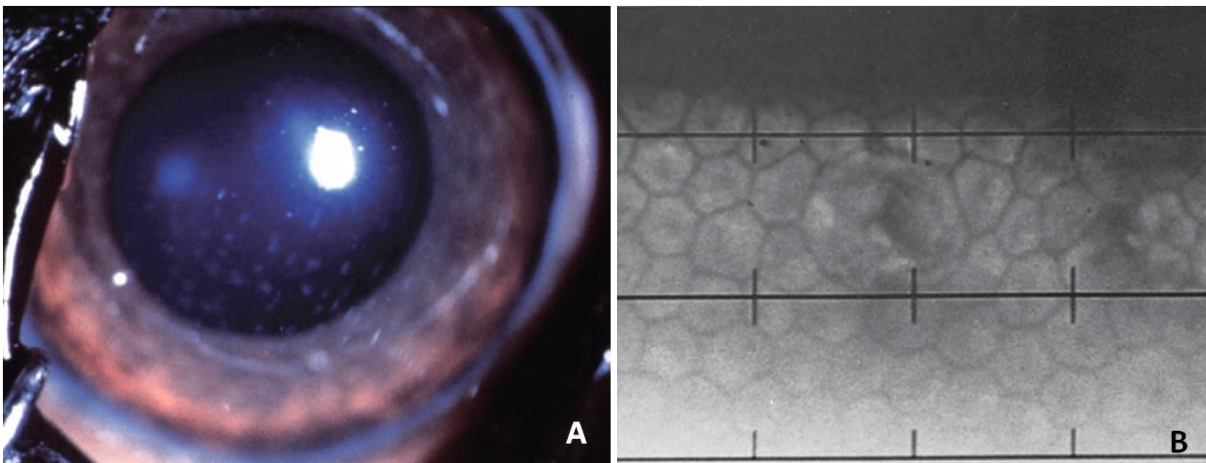
- 1) Debridement and intralesional 20% trichloroacetic acid
- 2) Surgical excision

Sample Question 2

Picture A is a clinical photograph from an American Cocker Spaniel.

Question 1: How can we get image B?

Question 2: What is your clinical diagnosis?



Correct answer

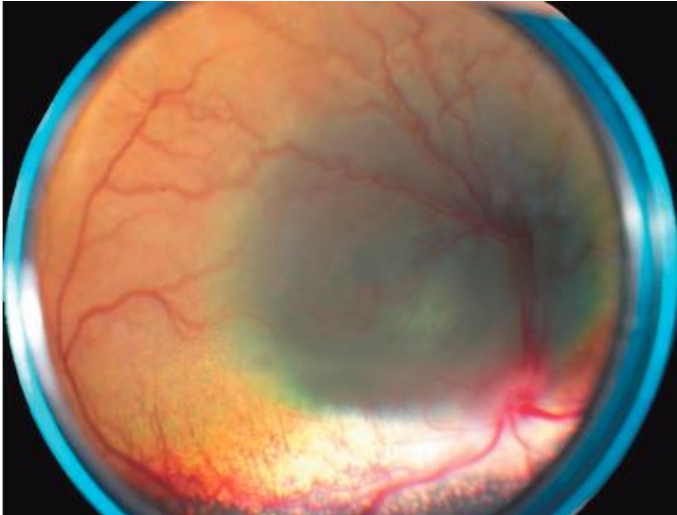
Answer 1: By using specular microscopy

Answer 2: Posterior polymorphous dystrophy

Sample Question 3

Question 1: Please describe the morphological findings.

Question 2: Please list the differential diagnosis (2 main types)



Correct answer

Answer 1: A focal well demarcated hyporeflective circular, grey lesion located at the tapetum. The lesion is about 1cm in diameter. The retina is also separated by subretinal oedema or exudation.

Answer 2: Differential diagnosis

Neoplastic

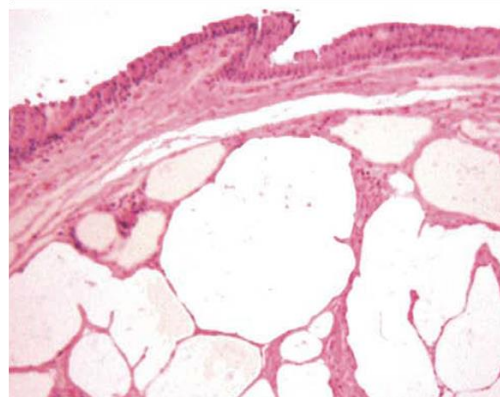
Inflammatory

Sample Question 4

This is a 8-year-old DSH. The condition is bilateral.

Question 1: What is your clinical diagnosis?

Question 2: Please list 2 possible etiologies.



Correct answer

Answer 1: Lipogranulomatous conjunctivitis

Answer 2: Solar radiation; meibomian glands rupture

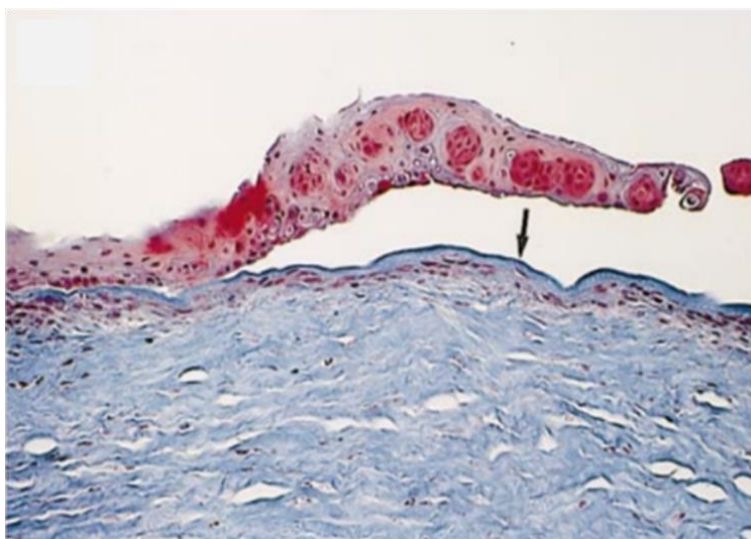
Sample Question 5

This is a histological slide of cornea.

Question 1: Please name the stain.

Question 2: Please describe 2 pathological features in this slide.

Question 3: What is the most likely clinical diagnosis?



Correct answer

Answer 1: Masson's trichrome stain.

Answer 2: 1) stromal hyaline acellular zone

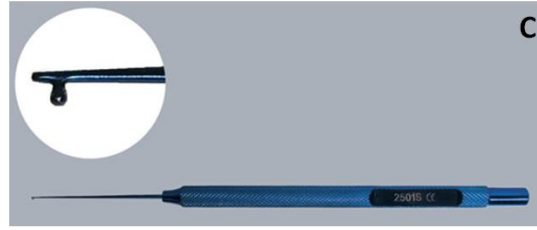
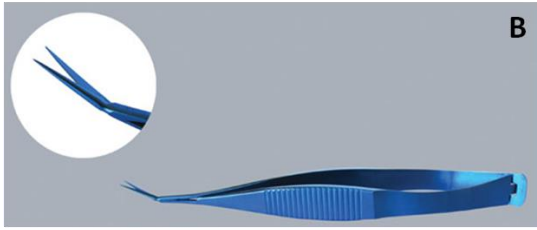
2) non-adherent epithelium undergoes a morphologic change

Answer 3: Spontaneous chronic corneal epithelial defects, SCCEDs

Sample Question 6

Question: Please name those instruments commonly used in cataract surgery.





Correct answer

Answer:

- A. Utrata capsulorhexis forceps
- B. Vannas capsulotomy Scissors
- C. (Lester) Lens Manipulator